



# Reliable, Secure Email

Professional, Complete, Dependable  
Easy to Learn, Use and Grow

## Relax...

MDaemon is the one email server designed for beginners and professionals alike. It works skillfully and silently while staying out of the way.



Built on and above the industry standards, MDAemon provides all of the servers you need, including web mail, groupware, IMAP, POP3 and SMTP.

If security is your concern, MDAemon leads the others at blocking spam and preventing unauthorized access.

MDaemon also comes with all of the professional widgets required for fine-tuning large or specialized applications.

Serving the international marketplace, MDAemon is localized in multiple languages, with some 30 available for its web mail and groupware clients, plus eight for the MDAemon GUI and documentation.

MDaemon makes economic sense for installations with one, six, 100, 1,000 or more users.

It takes care of email. It lets you get on with your work.

## Why Use MDAemon

- **Flexible Ease of use:** MDAemon comes with tons of features, for the beginner and the pro. Choose your user interface: Easy or Advanced. Both are convenient.
- **Intelligent Defaults:** MDAemon can be up and running in 10 minutes, usually on your current hardware and operating system, legacy or new.

- **Local and Web Setup:** Administer MDAemon from a traditional application or from its web interface.
- **AntiSpam:** MDAemon is the leader at fighting spam, deploying both source blocking and message detection technologies.
- **Security:** MDAemon is so skilled at stopping unauthorized use some enterprises use it as a security Gateway for Microsoft Exchange.

• **Web mail Server:** Check messages and more from any computer with access to the Web.

• **Groupware Functionality:** Share calendars, contacts, and task lists over the web or in Microsoft Outlook\*.

• **Multilingual:** Web mail has some 30 localizations; the MDAemon GUI has eight.

• **Sensible Economy:** Professional features with small enterprise licensing and pricing policies.

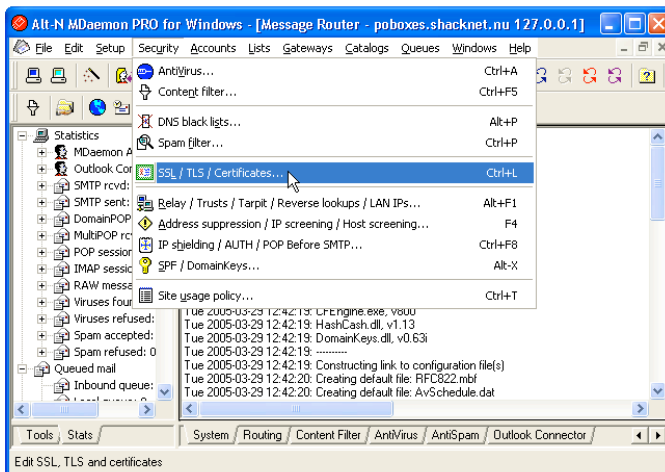
## Who Uses MDAemon

- Small and large businesses
- Internet service providers
- Hospitals and doctor offices
- Charities, schools and school districts
- Professional athletic teams
- Government agencies
- Individuals

## What You Get

- POP3, SMTP, IMAP, web mail, and Groupware functionality
- Multiple domains
- Accounts, account alias
- User account self-management

- Web and local administration
- Mailing lists, Gateways, Catalogs
- Public folders, priority mail, signature files
- Bandwidth throttling
- Spam blocking and filtering
- IP management, trusted hosts, black lists and white lists
- SPF, DomainKeys, content filtering



- SSL, WAP and WML
- LDAP and ODBC integration
- More...

## Requirements

Despite its obvious power and flexibility, MDAemon has minimal hardware and software requirements.

**Software:** Any version of Windows from 95 through XP and the latest servers

**CPU:** Pentium II 450 MHz

**Memory:** 256 MB RAM

**Disk Space:** 30 MB, plus more for mail storage

**Network:** TCP/IP with connection to Internet, Intranet or LAN

\* Using Outlook with the groupware server requires Outlook Connector for MDAemon.

